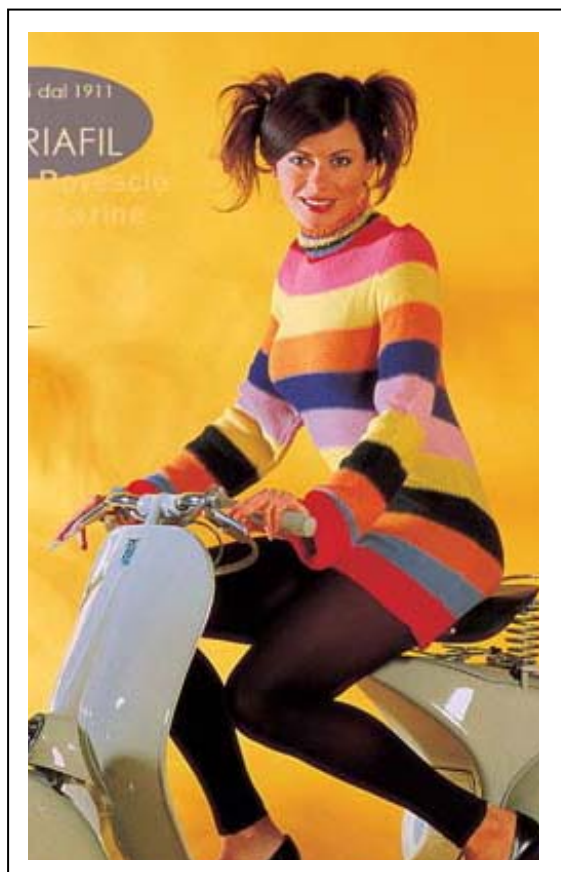


The “Micaela” Maxi-pullover

Selman's Creative Craft



UK	S	M	L
Italy	40	(42)	44

Adriaafil Yarn - “ **Sierra Andina** ” a total of 400gm

- 1 x 50gm ball of shade 17 (Red)
- 1 x 50gm ball of shade 69 (Sky Blue)
- 1 x 50gm ball of shade 56 (Orange)
- 1 x 50gm ball of shade 89 (Anthracite)
- 1 x 50gm ball of shade 55 (Yellow)
- 1 x 50gm ball of shade 53 (Shocking Pink)
- 1 x 50gm ball of shade 49 (Violet)
- 1 x 50gm ball of shade 04 (Pink)

Knitting needles 4 mm

Tapestry Needle with rounded tip

Stitch Holders

Tension – 19 sts and 30 rows = 10cm square in
purlled stitch using 4 mm needles.

Abbreviations :

beg	- beginning	rep	- repeat
dec	- decrease	rem	- remaining
st (s)	- stitch (es)	k	- knit
cont	- continue	p	- purl

Pattern Stitches :

- Elastic rib (finish)
- Rib stitch 2/2
- Purlled stitch (every row purl)
- Knit stitch to end elastic rib

Back:

With 4 mm knitting needles and red yarn cast on 80 (86-92) sts. and work in purlled stitch. Knit 30 rows in red, then 20 rows in each colour in the following order sky blue, orange, anthracite, yellow, pink, violet, orange, yellow, shocking pink, then finish with red yarn. At the same time, when work measures 4 cm. from beg., dec. at sides 1 st. every 6 rows 3 times. When work measures 50 (52-54) cm. from beg. (end of the violet band), to shape the armholes dec. at sides, inside the 2 edge sts., 2 sts. every 4 rows 2 (3-4) times. When work measures 25 cm. from beg. of armholes, cast off all the rem. stitches.

Front:

Work in same way as back when work measures 70 (72-74) cm. from beg. (end of the shocking pink band). To shape the neckline, place the 20 (22-24) centre sts. on holder and finish the two parts separately; after 2 rows, dec. centrewise, inside the 2 edge sts., 2 sts. and rep. these decrs. every 4 rows another 3 times. When work measures 5 cm. from beg. of neckline, cast off rem. stitches for the shoulders.

Sleeves:

With 4 mm knitting needles and the red yarn cast on 60 (64-68) sts. and work in purlled stitch. alternating the colours in same way as back. At the same time, at ends incr. 1 st. every 20 rows 4 times, 1 st. every 14 rows 4 times. When work measures 50 (52-54) cm. from beg., to shape the armholes decr. at sides, inside 2 sts., 2 sts. every 4 rows 16 times. When work measures 23 cm. from beg. of armholes, cast off rem. stitches.

Finishing:

Sew up a shoulder. With 4 mm knitting needles and the red yarn pick up 88 (94-100) sts. around the neckline (including the standing sts.) and work in rib st. 2/2 alternating 4 rows in every colour in the same order as the back; when work measures 12 cm. from beg. of neck (end of the orange band), cont. with yellow yarn and work another 2 rows in rib st. 2/2, then in elastic rib for 4 rows; cast off the stitches with needle. Sew up the other shoulder and the sides of neck allowing for cuff. Join and sew on the sleeves. Sew up the sides. Fold the front and back edge back on wrong side for 2 cm and sew on with blind stitching.

